

Chocolate World®



巧克力备受世界各地消费者的喜爱，提到巧克力，不论是口感还是造型，多数人都认为最好的巧克力产自比利时。

比利时高端巧克力模具专业制造商——Chocolate World，30年来潜心钻研PC巧克力模具的研发，所生产的模具品质经ISO认证，其精美多变的造型，结实耐用的品质，多年来深受世界各国专业巧克力大师的喜爱。

来自CHOCOLATE WORLD的巧克力模具均由PC材质制成。

PC材质模具耐摔、不易破裂、巧克力成品光泽度好的特性满足了巧克力大师对巧克力模具所有苛刻的要求。

其他器具系列	蛋糕转台系列	打蛋盆打蛋器系列	烙印模系列	新娘花系列	蛋糕塔系列	挤花袋系列	ONEWAY系列	花嘴系列	面杆系列	SILKOMART系列	CHOCOLATE WORLD系列	巧克力模系列	SQUIRES KITCHEN系列
106	114	120	122	124	125	130	131	133	138	140	178	189	193

Chocolate World (比利时)



孙悟空造型巧克力模

编码: PP1856
 单品规格: 圆径48x37
 模具外尺寸: 275x135x24
 每盘: 2x6pcs

注: 1格令 (gr) = 0.0647989克 (gr)

编号
PP1727
 37.5x32x12.5 (2x7.5gr)
 275x135x24 (3x6pcs)
 模具外尺寸、每盘数量
 单枚规格、单枚克重



PP1727

37.5x32x12.5 (2x7.5gr)
 275x135x24 (3x6pcs)



PP1697

33x25x11.5 (2x5.5gr)
 33x25x15.5mm
 275x135x24 (3x6pcs)



PP1698

33x29x12.5 (2x6gr)
 275x135x24 (3x6pcs)



PP1699

35x33x12.5 (2x6gr)
 275x135x24 (3x6pcs)



PP1006

38x27x16 (15gr)
 275x135x24 (3x8pcs)



PP1319

49x32x8 (2x8gr)
 275x135x24 (2x7pcs)



PP1739

45.50x99.50x19 (2x49gr)
 275x135x24 (1x4pcs)



PP1771

54.5x26x18 (11.50+8gr)
 54.5x26x12
 275x135x24 (2x6pcs)

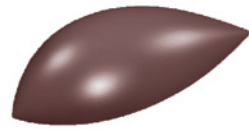


PP1691

40x51x32.5 (30gr)
 275x135x24 (2x6pcs)

TEL: 0510-8377 7515
 FAX: 0510-8377 5476

SANNENG



PP1673

45.5x25x12.5 (2x10gr)
275x135x24 (2x8pcs)



迷你咖啡豆造型

PP2028

19x13x7 (1gr)
275x175x24 (9x12pcs)



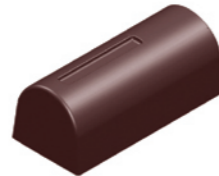
PP1073

35x21x16 (9gr)
275x135x24 (3x8pcs)



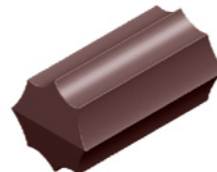
PP1025

36x22x20 (15gr)
275x135x24 (3x8pcs)



PP1617

39x18x15.5 (10gr)
275x135x24 (5x5pcs)



PP1730

33.5x18x9.5 (2x4g)
275x135x24 (3x8pcs)



PP1045

30x27x19 (13gr)
275x135x24 (3x8pcs)



PP1646

34x24x12 (10gr)
275x135x24 (3x8pcs)



PP2247

36x26x18 (18gr)
275x175x24 (4x8pcs)



PP1726

32x15.5x8 (2.5gr)
275x135x24 (3x12pcs)



PP2351

49x26x17 (15gr)
275x175x24 (4x8pcs)



PP1297

102x36x19 (41gr)
275x135x24 (1x7pcs)



PP1576

29x34.4x17 (12gr)
275x135x24 (3x7pcs)



PP1145

65x57x14 (35gr)
275x135x24 (2x4pcs)



PP1023

30x22x12.5 (2x6gr)
275x135x24 (3x6pcs)



PP1218

30x36x19 (14gr)
275x135x24 (3x7pcs)



PP2161

104x88x18 (100gr)
275x175x24 (3x6pcs)



PP2383

33x33x11 (2x7.50gr)
275x175x24 (4x6pcs)



PP1214

31x35x18 (15gr)
275x135x24 (3x8pcs)



PP2143

Ø20x8 (2gr)
275x175x24 (6x10pcs)



PP1744

35x22.5x16 (10.5gr)
275x135x24 (3x8pcs)



PP1513

34x33x8 (2x8.6gr)
275x135x24 (2x7pcs)



PP2218

52x46x11 (25gr)
275x175x24 (3x4pcs)



PP2080

30x26x9 (2x5gr)
275x175x24 (4x8pcs)

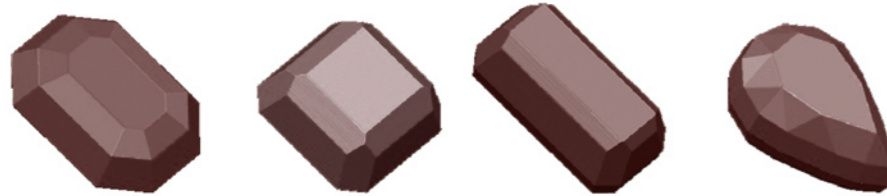


PP1417

33x31x15 (11gr)
275x135x24 (3x8pcs)

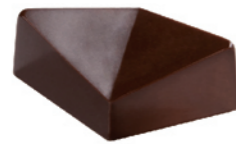


钻石系列巧克力模



PP1632

34x20x26 (2x5gr)
275x135x24 (3x8pcs)



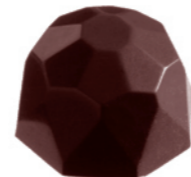
PP1780

46x28x21 (10gr)
275x135x24 (3x7pcs)



PP1782

44.5x32x22.5 (11gr)
275x135x30 (3x6pcs)



PP1024

31x31x20 (15gr)
275x135x24 (3x7pcs)



CF0608

top Ø 25x5,75 mm
bottom Ø 25x13,25 mm
3x8 pc/4,5 gr
275x135x24
double mould



CF0609

top Ø 35x6,50 mm
bottom Ø 35x18 mm
3x6 pc/13 gr
275x135x24
double mould



注: 1格令 (gr) = 0.0647989克 (gr)

编号

PP1727

37.5x32x12.5 (2x7.5gr)
275x135x24 (3x6pcs)

模具外尺寸、每盘数量

单枚规格、单枚克重



PP1084

35x29x21 (15gr)
275x135x24 (2x8pcs)



PP1011

42x32x19 (16gr)
275x135x24 (3x6pcs)



PP1210

28x30x9 (5gr)
275x135x24 (4x8pcs)



PP1120

38x35x9 (2x7gr)
275x135x24 (3x6pcs)



PP1070

32x29x21 (14gr)
275x135x24 (3x8pcs)



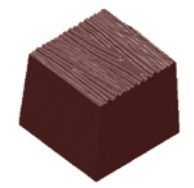
PP1402

50x20x11 (2x6gr)
275x135x24 (3x6pcs)



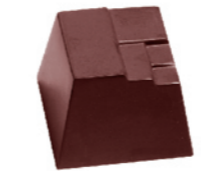
PP1587

52x22x7 (2x7gr)
275x135x24 (3x6pcs)



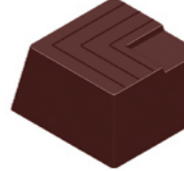
PP1676

22.5x22.5x19.5 (11.5gr)
275x135x24 (4x8pcs)



PP1557

25.5x25.5x18.9 (11.75gr)
275x135x24 (3x8pcs)



PP1607

27x27x14 (10.3gr)
275x135x24 (3x7pcs)



PP1036

29x29x20 (17gr)
275x135x24 (3x8pcs)



PP1059

27x27x18 (14gr)
275x135x24 (3x8pcs)



PP1652

26x26x14 (10gr)
275x135x24 (3x8pcs)



PP1588

67x33x5 (12gr)
275x135x24 (3x3pcs)